

Surgical Table Specifications

Product Name	Operating Table MOT-6702X
Product Number	18-200-30
Product Description	Operating Table MOT-6702X
Medical Device Approval	13B1X00306N10225
Classification	General Medical Devices I
	Medical Devices subject to special maintenance and management

Main Material

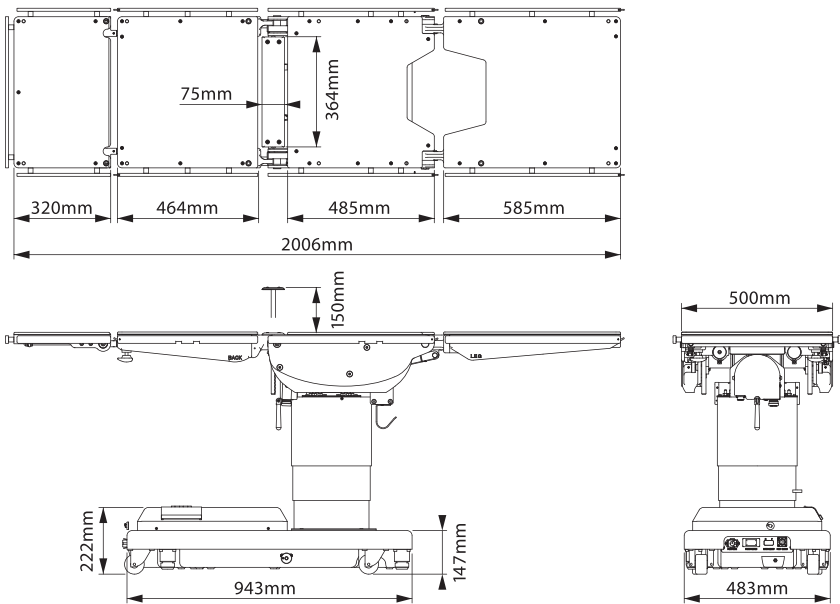
Table Plate	Phenolic
Side Rail	SUS304F Stainless Bar
Side Frame	AC7A Aluminum Alloy Casting
Elevation Column (Inside)	FCD450 Spheroidal Graphite Iron Casting
Elevation Column (Cover)	SUS304CP Stainless
Base	FC250 Gray Iron Casting

Please contact your local Mizuho OSI distributor for a complete list of approved MOT-6702X Surgical Table Accessories.

Technical Specifications

Elevation Range	1053mm ~ 600mm	Table top rotation	210°
Trendelenburg	Head Up 30°, Head Down 30°	Power Brake (lock/unlock)	
Lateral Tilt	30° Left / Right	Beach Chair position	
Power Kidney Bridge	15 cm (electric)	Maximum Lifting Capacity	540kg
Back Section	Up 90°, Down 40°	Maximum Articulation Capacity	450kg
Back Section	Removable	Table Top Dimentions	2006mm x 500mm
Flex / Reflex	40° / 90°	Base Dimentions	943mm x 483mm
Leg Section	Down 100°, Up 20°	Size of Side Rail	10mm x 25mm
Leg Section	Removable / Solid	Table Weight	340Kg
Head Section	Up 60°, Down 90° (manual)	Supply Voltage	100V ~ 240V (50 / 60Hz)
Return to Level	Trendelenburg, Lateral, Back Section, Leg Section, Flex/Reflex, Beach Chair, Kidney Bridge.	Power Input	450VA
		Battery Power	24V
		Operating Power	24V

Outer dimension drawing



Caution

- To ensure patient and staff safety, please read and understand the instruction manual completely before use. Carefully observe and comply with all warnings, cautions and instructions.
- Be sure to conduct all recommended pre and post operative inspections.
- For details regarding service of your MOT-6702X please contact your local Mizuho OSI distributor.

Distributed By:

Mizuho | **OSI**

30031 Ahern Avenue Union City, CA 94587-1234 / USA
Telephone: 510-429-1500
Toll Free: 800-777-4674
Outside USA: +1 510-429-1500
Fax: 510-429-8500
www.mizuhoosi.com / www.newhipnews.com

* Due to our policy of continuous improvement, specifications may change without prior notice.
* All published CG photos and illustrations have been from images.

CE  Mizuho Ikkogyo Co., Ltd
3-30-13 Hongo, Bunkyo-ku
Tokyo 113-0033 Japan
Tel: +81-3-3815-3194

EC REP Emergo Europe
Molenstaat 15, 2513BH
The Hague, The Netherlands
Tel: (31) (0) 70 345-8570
Fax: (31) (0) 70 646-7299

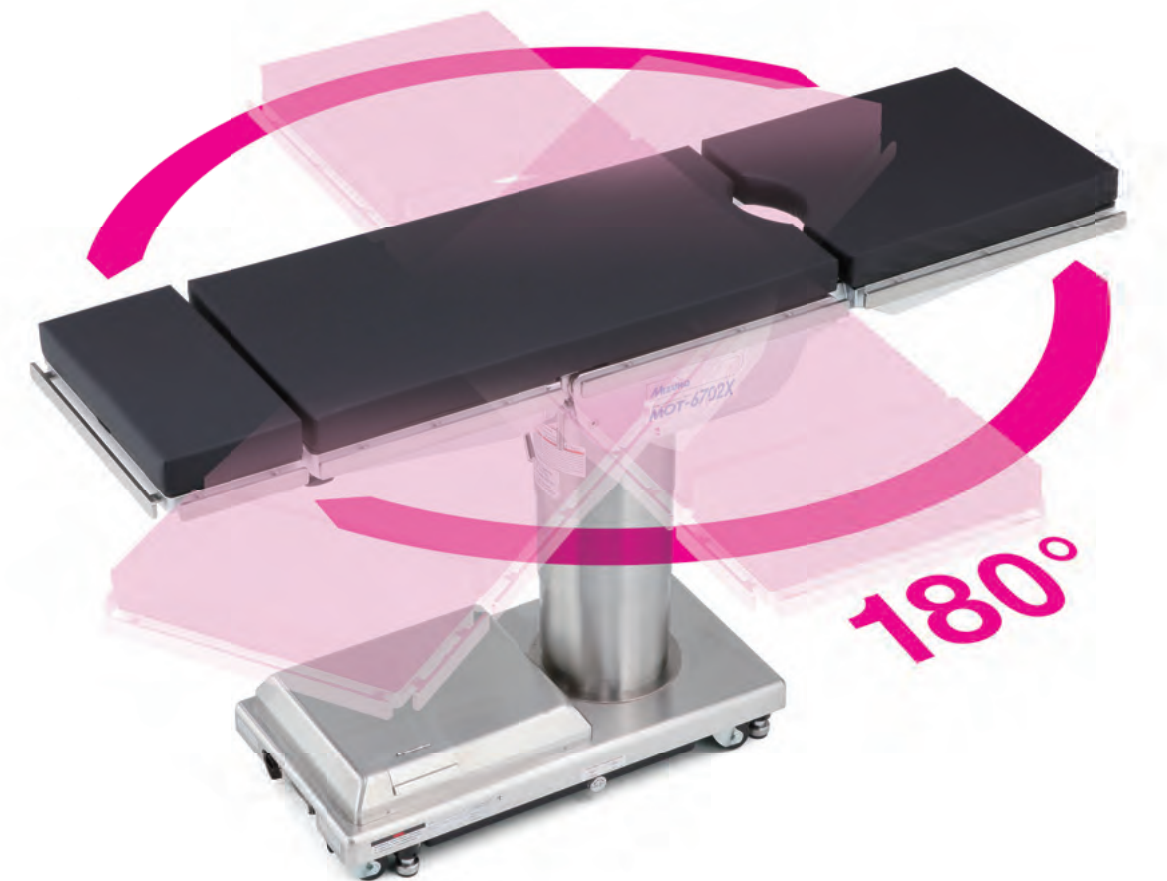
Mizuho Operating Table
MOT-6702X



Electro-hydraulic operating table

The New Standard in Full Body Imaging, Lift & Articulation Power.

Features include **540kg** lift and **450kg** articulation capacity, removable back and leg sections, 210° table top rotation, 600mm low table height, Auto Beach Chair position, 30° tilt, Trendelenburg, Reverse Trendelenburg.



210° Table Top Rotation Offers Unique Advantages

- Provides a larger unobstructed imaging area for upper and lower body
- Easier C-arm access
- Effectively reduces interference of the table base with surgeon and staff
- Compliments accessories such as 1000mm Carbon Fiber Extension
- Full weight capacity is maintained at 210° rotation
- Effectively eliminates space conflict between surgeon and anesthesiologist during head end surgery
- Provides generous leg room for standing or seated surgeons

No reverse patient orientation required! The rotating top allows the patient, table top and hand control pendant to work cohesively without confusing reverse orientations.



Removable Back and Leg Sections.

Allows the use of optional accessories such as the 1000mm fully Carbon Fiber Back/Leg Section for 360° unobstructed imaging for upper and lower body procedures. Removable Back Section provides excellent anesthesia access to patients in the lithotomy position.

Whether operating at the head or foot end of the table, removable table sections provide more space and easier access for standing or seated surgeons.



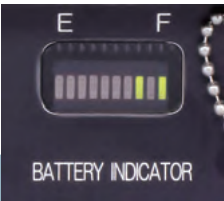
Durable Back-Lit, One Touch Hand Control Pendant

- Back-Lit Control for High Visibility in Low Lighting
- Automatic Brake Locking Feature
- Audible Alarm for Kidney Bridge, Back-up Articulation
- Anatomically Correct Return to Level
- Anatomically Correct Beach Chair Position
- Low Battery Warning Lamp
- Can be used in conjunction with optional Three Function Foot Control
- Durable and Water Resistant
- Optional IR Remote Control



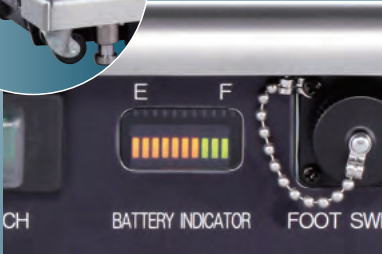
Head section can be used as a foot extension during transfer.

- Radiolucent top permits clear, sharp image resolution.
- Adjustable head section can be extended to accommodate taller patients.



Remote control with self-diagnostic function

A function for checking whether the remote control can be used is provided as a safeguard in the unlikely event of an electric system failure. The diagnostic result is displayed on the battery indicator located on the column of the main body.



Battery life indicator & table base with detachable power cord connection



Emergency Stop Switch



Manual Emergency Brake Release

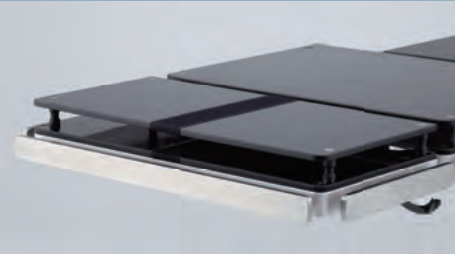


Power 4-point Brakes for stability on uneven floors

4 swivel Casters provide ease of movement for cleaning between cases



Secondary Function Switches for backup to primary control. (A)

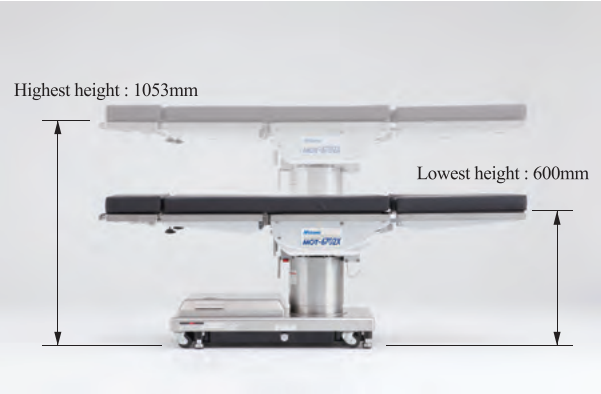


Full Length X-Ray Top Accessory allows insertion of cassettes from the side for superior imaging flexibility.

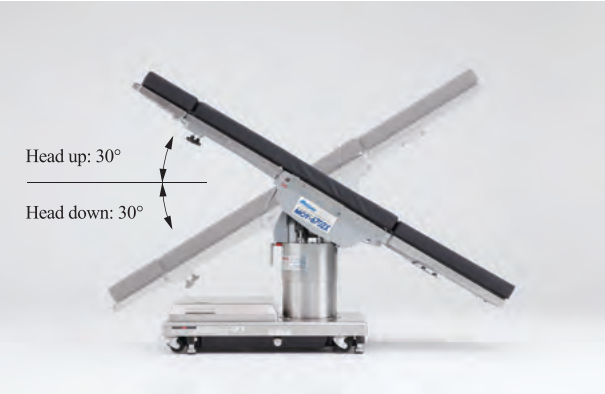


Power Kidney Bridge for safe and easy positioning

Elevation range of MOT-6702X allows for optimal surgical access for patients of all sizes with a low height of 600mm and a maximum height of 1053mm



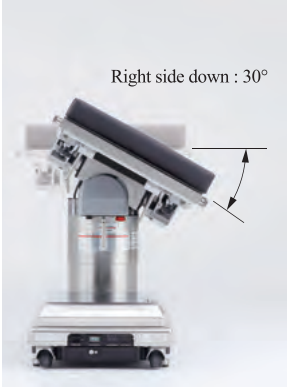
Elevation Range



30° Trendelenburg and Reverse Trendelenburg

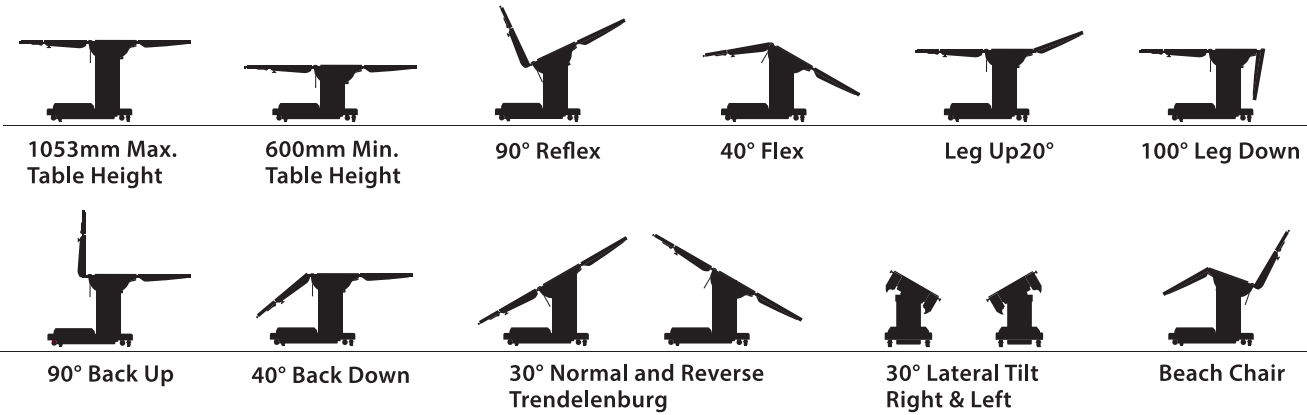


30° Lateral Tilt



Automatic Beach Chair Position allows for easy set up of shoulder arthroscopy and other upper body procedures

Optimally Versatile Table Functions for Today’s Most Demanding Procedures



Surgical Positions

= Imaging area



Upper Body Imaging
w/Carbon Fiber Extension



Lower Body Imaging
w/Carbon Fiber Extension



Neuro (lumbar)
180° Table Top Rotation



Neuro (head)
180° Table Top Rotation



Upper Body Imaging (Cardiovascular)
180° Table Top Rotation



Lower Body Imaging (Hip Revision)
Head Section attached to Leg Section with patient in normal orientation



Nephrectomy



Urology